

FED. ROAD DIST. NO.	STATE	U.S.N.P. & C. PROJECT NO.	FISCAL YEAR	SHEET NO.	TOTAL SHEETS
6	ARK.	1 PGM 379-A	1936	1	13
STATE JOB NO. 6-193					

STATE OF ARKANSAS  
STATE HIGHWAY COMMISSION

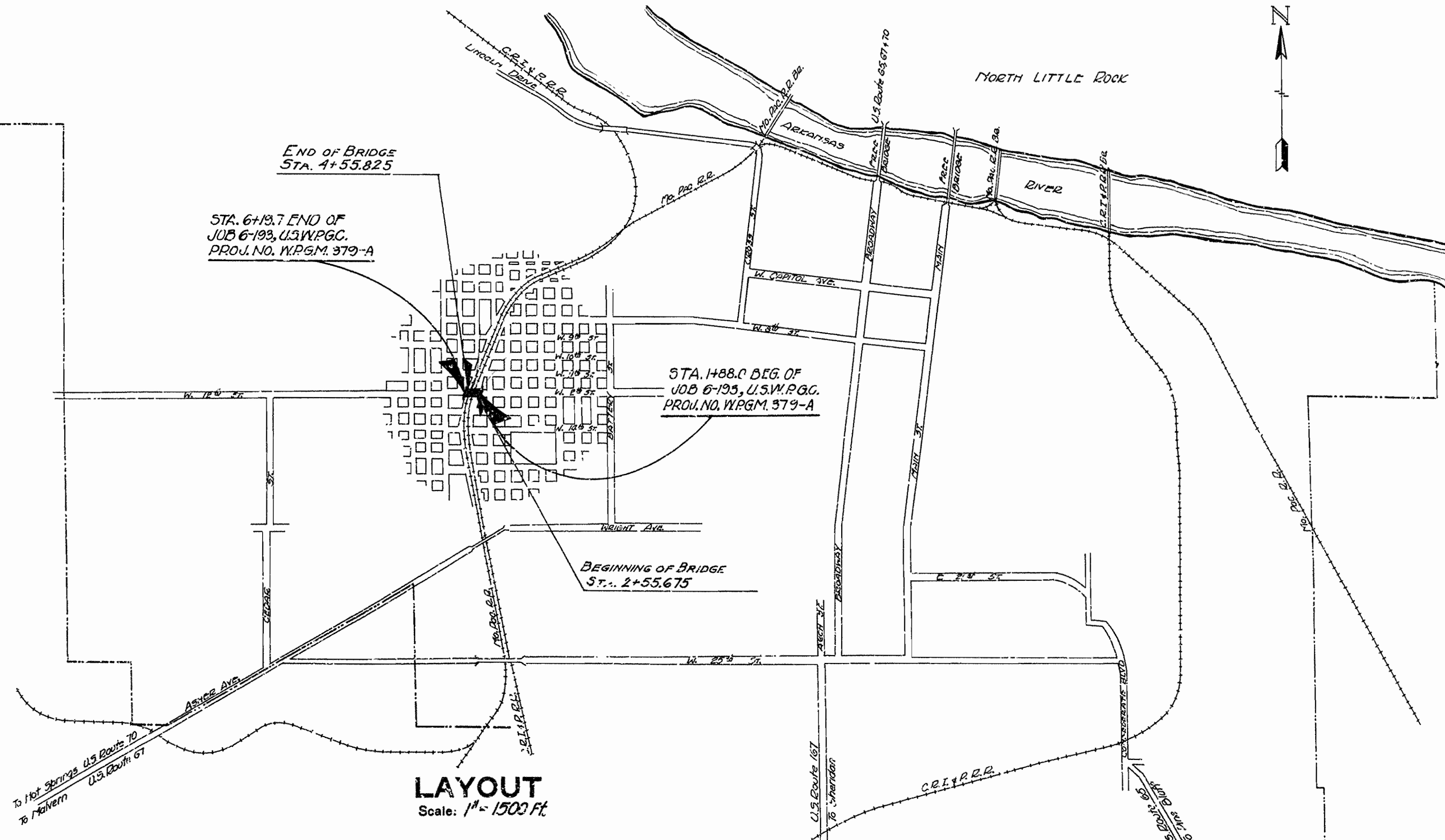
INDEX OF SHEETS

Sheet No.	Drawg No.	Title Sheet.
1	4177	Title Sheet.
2	4178	Quantity Sheet.
3	4179	Layout of Bridge No. 1963.
4	4180	Details of Arch.
5	4181	Bent bar list & details at ends of Arch Span.
6	4182	Details of Pylons.
7	4183	Details of Handrails.
8	4186	Special Details of 8" Concrete Pavement.
9	CP-1B	Details of Dowel bar assembly.
10	F.P.C.-9	Drop Inlets, Catch Basins & Manholes.
11	4184	Plan & Profile.
12	4185	Cross Sections.
13	2987	Bronze Project Marker Plates & Bronze State Bridge Name Plates.

**PLAN OF PROPOSED BRIDGE**  
**VIADUCT OVER C.R.I.&P AND MO. PAC. TRACKS**  
**ON WEST 12TH. ST., LITTLE ROCK, ARK.**  
**PULASKI COUNTY**  
**ROUTE SEC.**  
**JOB NO 6-193**

U.S. WORKS PROGRAM GRADE CROSSING PROJECT NO. WPGM 379-A

SPECIAL PROVISIONS	Sheets
Employment Centers for Labor	1
Subletting and labor.	16
Beginning and Prosecution of Work.	1
Extra and Force account Work.	1
Removing Minor Obstructions.	1
All Materials Furnished by Contractor.	1
Physical Characteristics of Aggregates.	4
Coarse Aggregates in two Sizes.	1
Stock Piling Aggregates.	1
Cement	2
Consistency of Mix	1
Volume of Material per Batch.	1
Checking Scales.	1
Central Mixing Plant	1
Hand Finishing	1
Curing	1
Revisions of Article 47.4	1
Paint for Traffic Stripes.	1
Reinforcing Steel for Pavements.	2
Removing Stone Curb and Concrete Curb.	1
Concrete Curb.	1
Drop Inlets.	2
Removing Concrete Sidewalks and Driveways	1
Portland Cement Concrete Sidewalk	1
Removing and Stockpiling Existing Bituminous Surface Course	1
Removal of Existing Bridges.	1
Construction over Railroad (Chicago Rock Island & Pacific Railway Company)	1
Construction over Railroad (Missouri Pacific Railroad Company)	1
Bronze Project Marker Plates & Bronze State Bridge Name Plates.	1
Excavation for Structures	1
Membrans Waterproofing	3
Compensation Insurance	1



LENGTH OF PROJECT = 431.7 Ft or .080 Mi.  
LENGTH OF BRIDGES = 200.15 Ft or .037 Mi.  
LENGTH OF EMBANKMENT = 231.55 Ft or .043 Mi.  
LENGTH OF JOB = 431.7 Ft or .080 Mi.

REVISED  
Special Provision - Employment  
Centers for Labor, 12-13-35  
Drawing No. for Special Details, 12-13-35

Specifications approved by Chief, Bureau of Public Roads, September 28, 1925, and adopted by State Highway Commission May 30, 1925 with revisions and Special Provisions as follows:

Permit	Revised	Mon. 1, 1931	Approved	June 13, 1931.
"	H	"	"	June 13, 1931
"	J	"	"	Nov. 21, 1932
"	L	"	"	July 6, 1925
"	M	"	"	June 13, 1931.
"	N	"	"	Oct 1, 1933

APPROVED  
CHIEF ENGINEER - U. S. BUREAU OF PUBLIC ROADS  
APPROVED  
DISTRICT ENGINEER - U. S. BUREAU OF PUBLIC ROADS  
APPROVED  
CHIEF - U. S. BUREAU OF PUBLIC ROADS  
APPROVED  
CHAIRMAN - STATE HIGHWAY COMMISSION  
APPROVED  
STATE HIGHWAY ENGINEER

*N.B. Jones*  
BRIDGE ENGINEER

BRIDGE NO. 1963

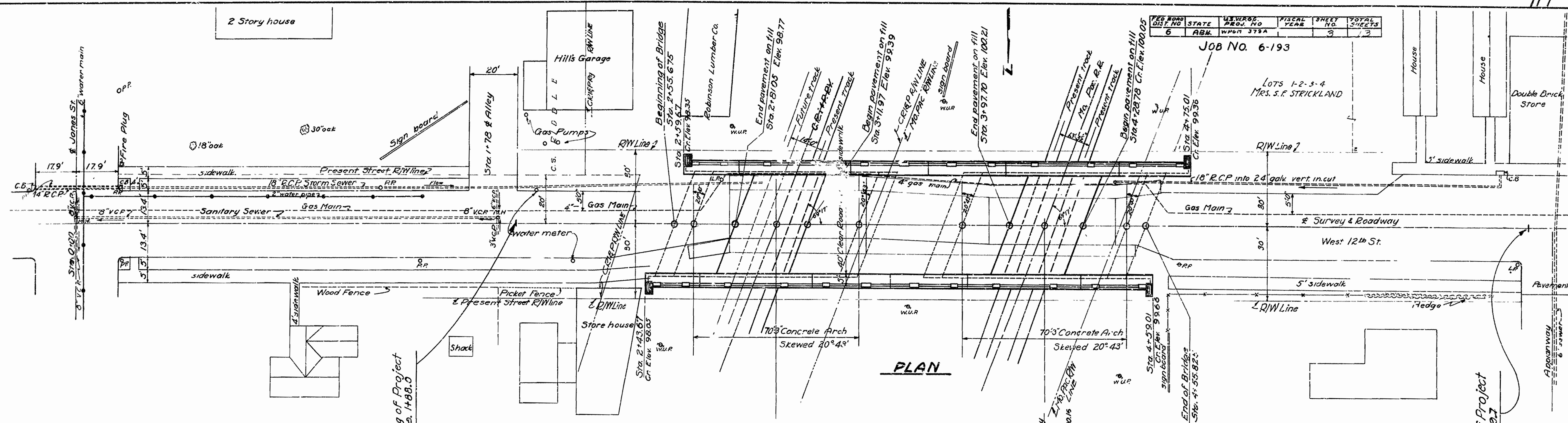
DRAWING NO. 4177



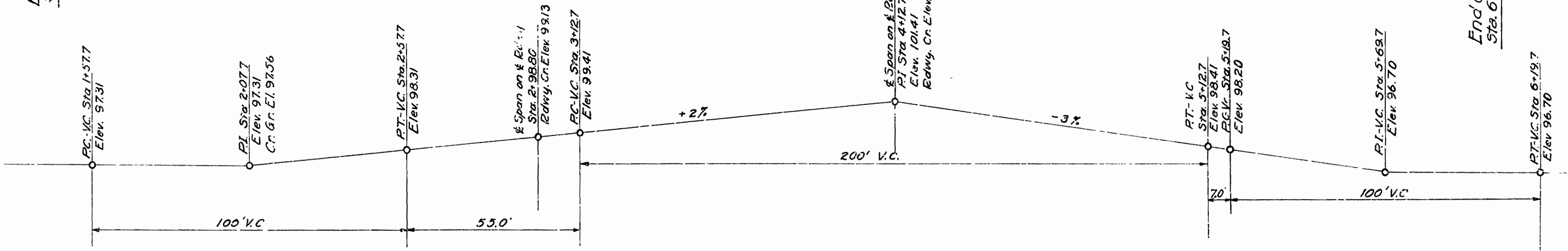
FED. ROAD DIST. NO.	STATE	U.S. HWY. PROJ. NO.	FISCAL YEAR	SHEET NO.	TOTAL SHEETS
6	ARK.	W.P.R. 375A		3	3

JOB NO. 6-193

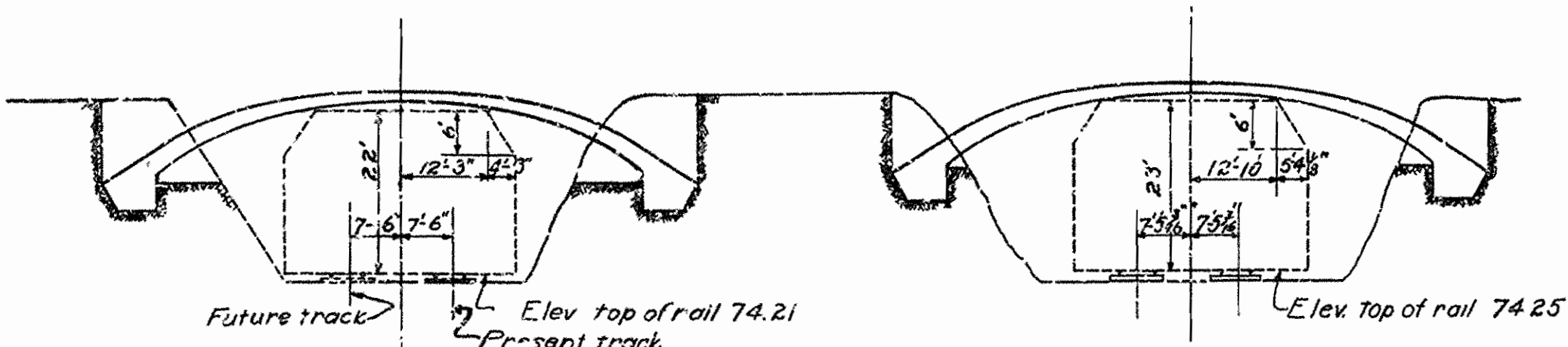
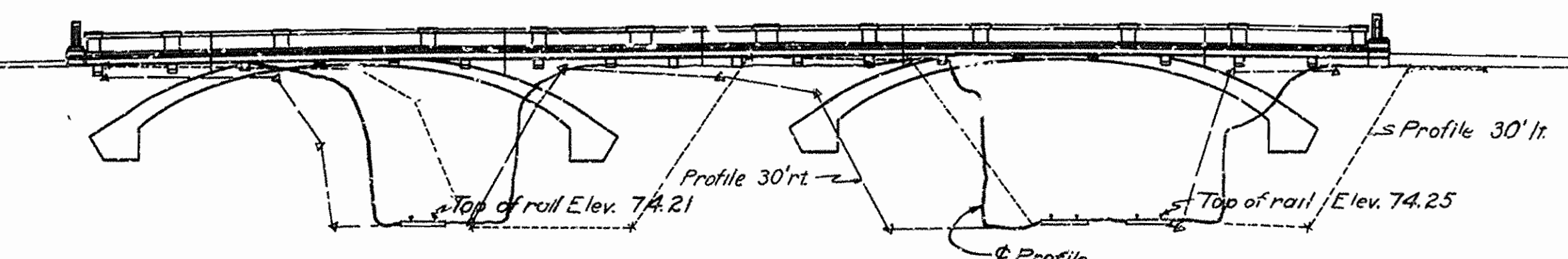
LOTS 1-2-3-4  
MRS. S.F. STRICKLAND



PLAN



ELEVATION



SECTION SHOWING CLEARANCE DIAGRAMS

GENERAL NOTES:-

The following portions of structure are to be Class 'S' concrete. Entire arch ring between skewbacks, together with increased thickness of Arch Ring to be used as pavement at midspan of arch. Portion of Spandrel wall between midspan of arch and open joints adjacent thereto. Cantilever brackets between wall joints on span. Fascia girder thruout structure. Pylon and pedestal for same above construction joint. Sidewalk slab and that portion of spandrel wall which is above the construction joint at the elevation of the bottom of fascia girders. All handrail.

Other portions of structure are to be Class 'A' concrete. Excavation under Arch ring, between abutment and Railroad cut estimated and to be paid for to a depth of 4 Ft. below Introde Curve. Excavation for Structures shall be classified as follows: Dry Excavation for Structures, shall be all excavation removed to depth of 2 Ft. below ground surface. Solid Rock Excavation for Structures, shall be all excavation removed below depth of 2 Ft. from ground surface. Specifications for Kansas Standard Road and Bridge Specifications adopted May 30, 1925. and revised.

Contractor shall provide Indemnity Bonds, to the Chicago, Rock Island & Pacific Railway Co., and to the Missouri Pacific Railroad Co., and submit plans of false work over track areas for approval prior to construction. Excavation to be adequately sheeted and braced so as to eliminate possible danger to adjacent tracks. Satisfactory railway clearances shall be maintained in construction.

For details of Arch, see Drwg No. 4180  
 " " Bent Bar List & Details of ends of Arch Spans see Drwg No. 4181.  
 " " Pylons see Drwg No. 4182  
 " " Hand Rails see Drwg No. 4183

Fill over Arch rings and Abutments to be thoroughly Compacted in a manner approved by Engineer. Bottom layer of fill at back edge of abutments to be of rock or broken stone to facilitate drainage thru spandrel walls. For details see Drwg No. 4180

EXISTING BRIDGE OVER C.R.I. & P.R.R.  
 60 Foot treated timber viaduct trestle; 3 spans; 18.5' clear roadway, timber deck with asphalt top; Two 8' walks with timber rail.

EXISTING BRIDGE OVER M. & P. R.R.  
 54 Foot steel thru girder span, with steel floor beams and stringers resting on concrete abutments; 18' clear roadway, timber deck with asphalt top; Two 5' walks with pipe handrail.

LAYOUT OF VIADUCT  
 OVER C.R.I. & P.R.R. AND M. & P. R.R.  
 AT WEST 12TH ST. LITTLE ROCK, ARK.

PULASKI COUNTY  
 ROUTE SEC.  
 ARKANSAS STATE HIGHWAY COMMISSION  
 LITTLE ROCK, ARK.

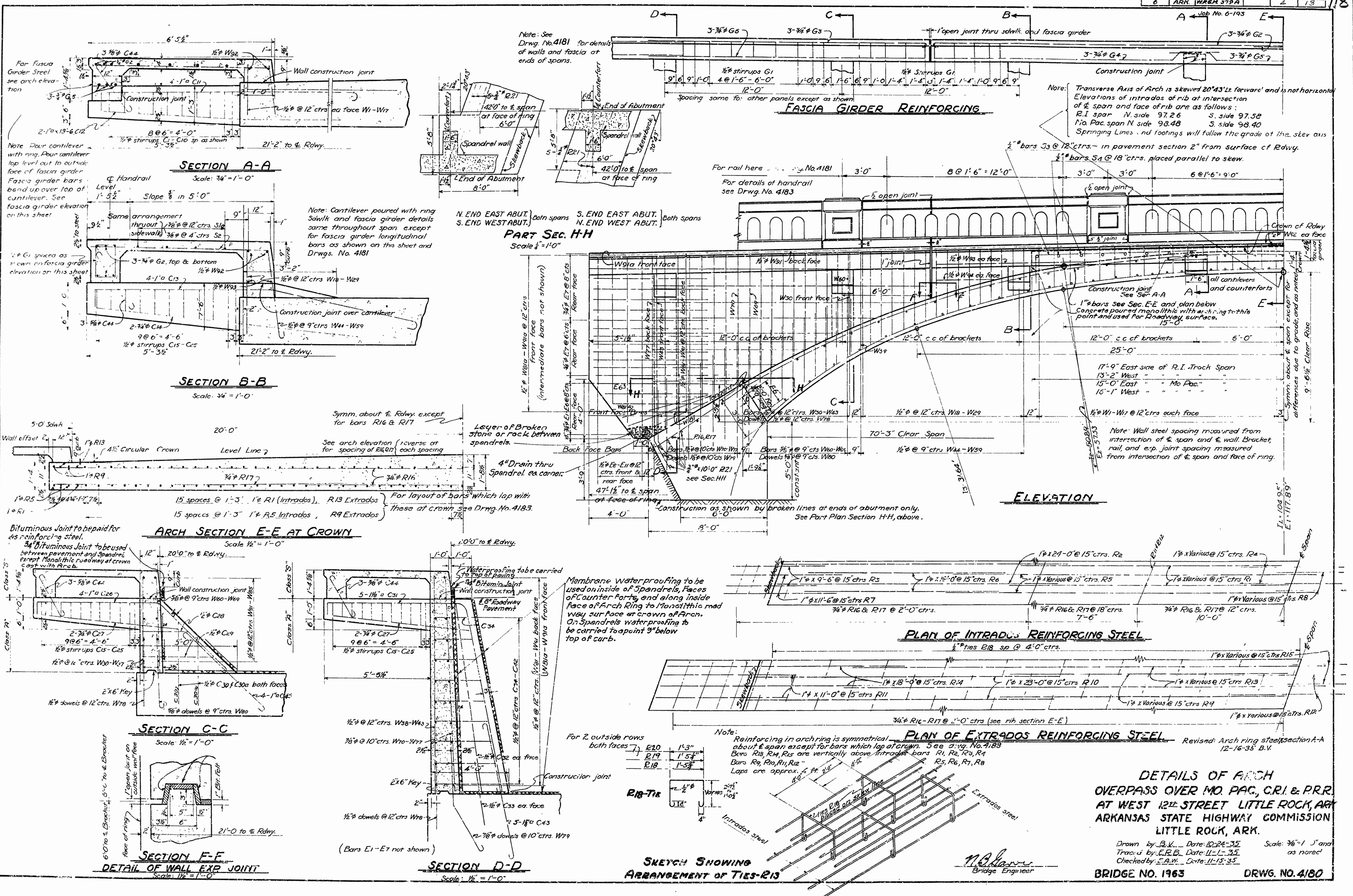
Drawn By: L.P.C. Date: 9-11-35 Scale 1"=20'-0"  
 Traced By: C.W.B. Date: 10-31-35  
 Checked By: E.A.V. Date: 11-18-35  
 BRIDGE No. 1963 DRAWING No 4179  
 CODE No. 901

Revised: General Notes, 12-13-35 P.G.B.  
 Beginning and end of bridge, 12-16-35 B.V.

W.C. Barlow  
 BRIDGE ENGINEER

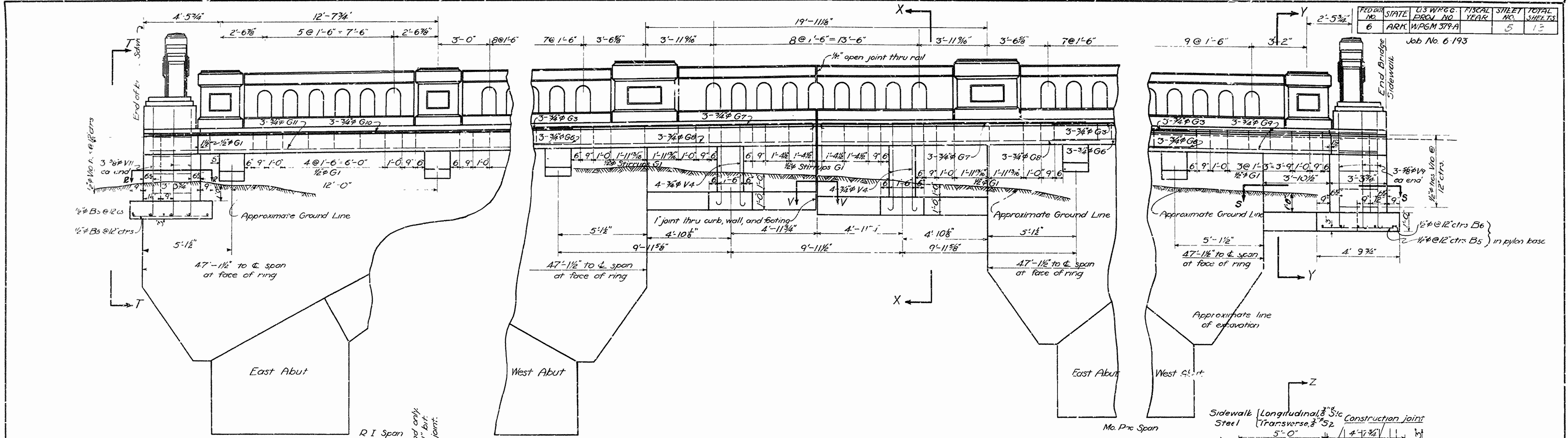
Note: Horizontal distances shown are parallel to E of roadway. For distances at right angles to tracks, multiply by 0.935

General Notes: Continued.  
 For details of Membrane waterproofing see Drwg No. 4180  
 For detail of 3/4" Bituminous Joint see Drwg No. 4180

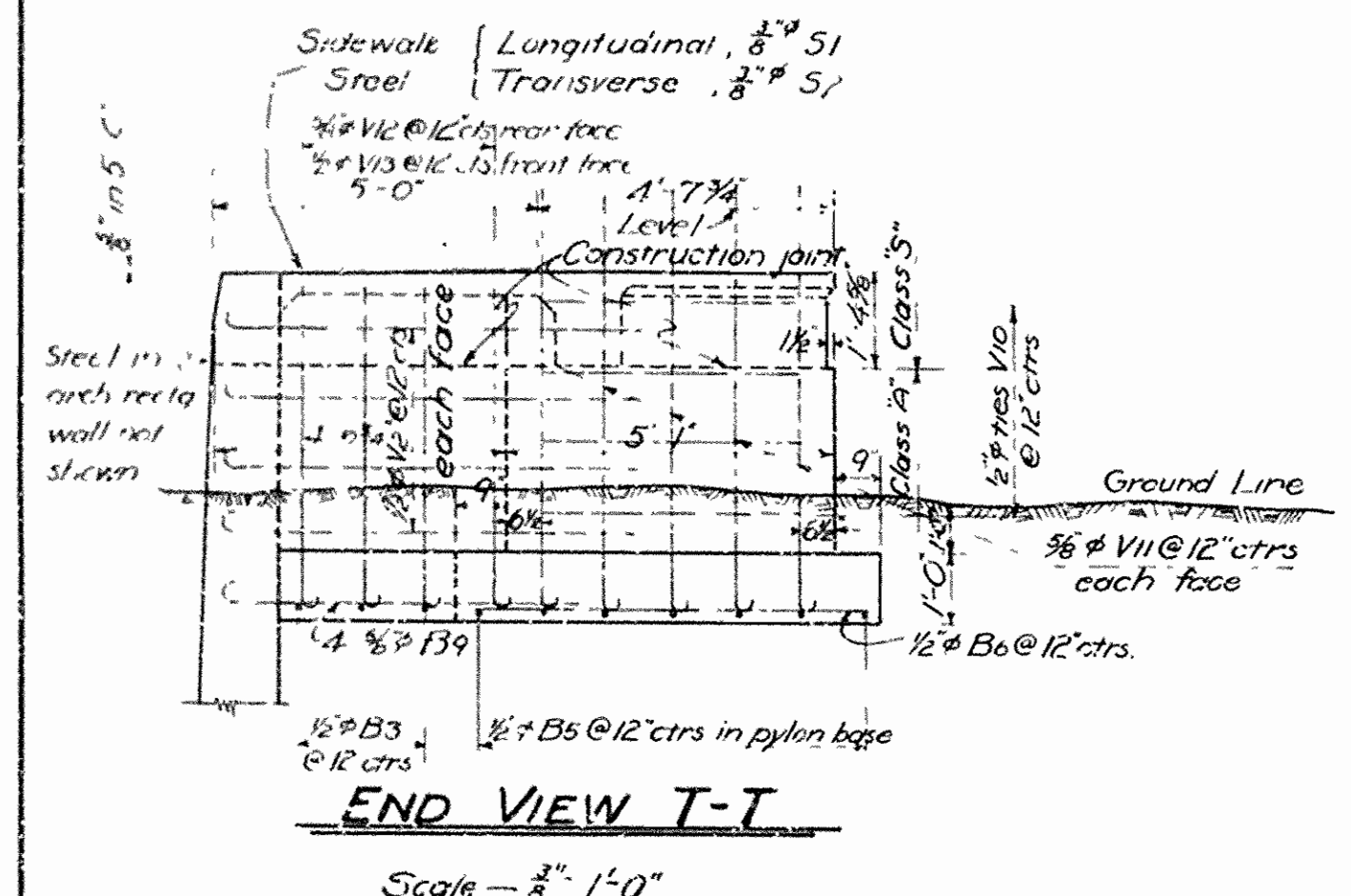


FED. DIST. NO.	STATE	U.S. HIGHWAY PROJ. NO.	FISCAL YEAR	SHEET NO.	TOTAL SHEETS
6	ARK.	W.P.G.M. 379A		5	13

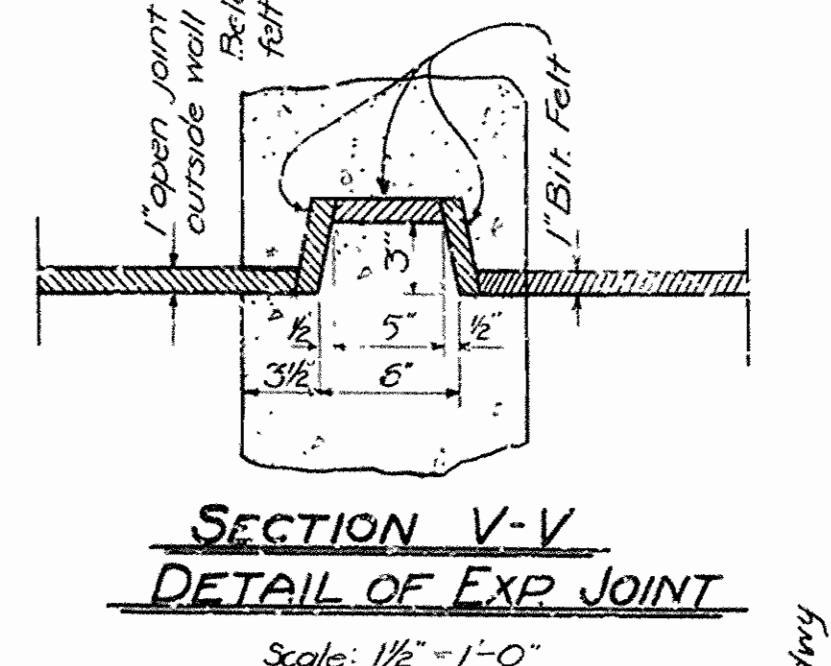
Job No. 6-193



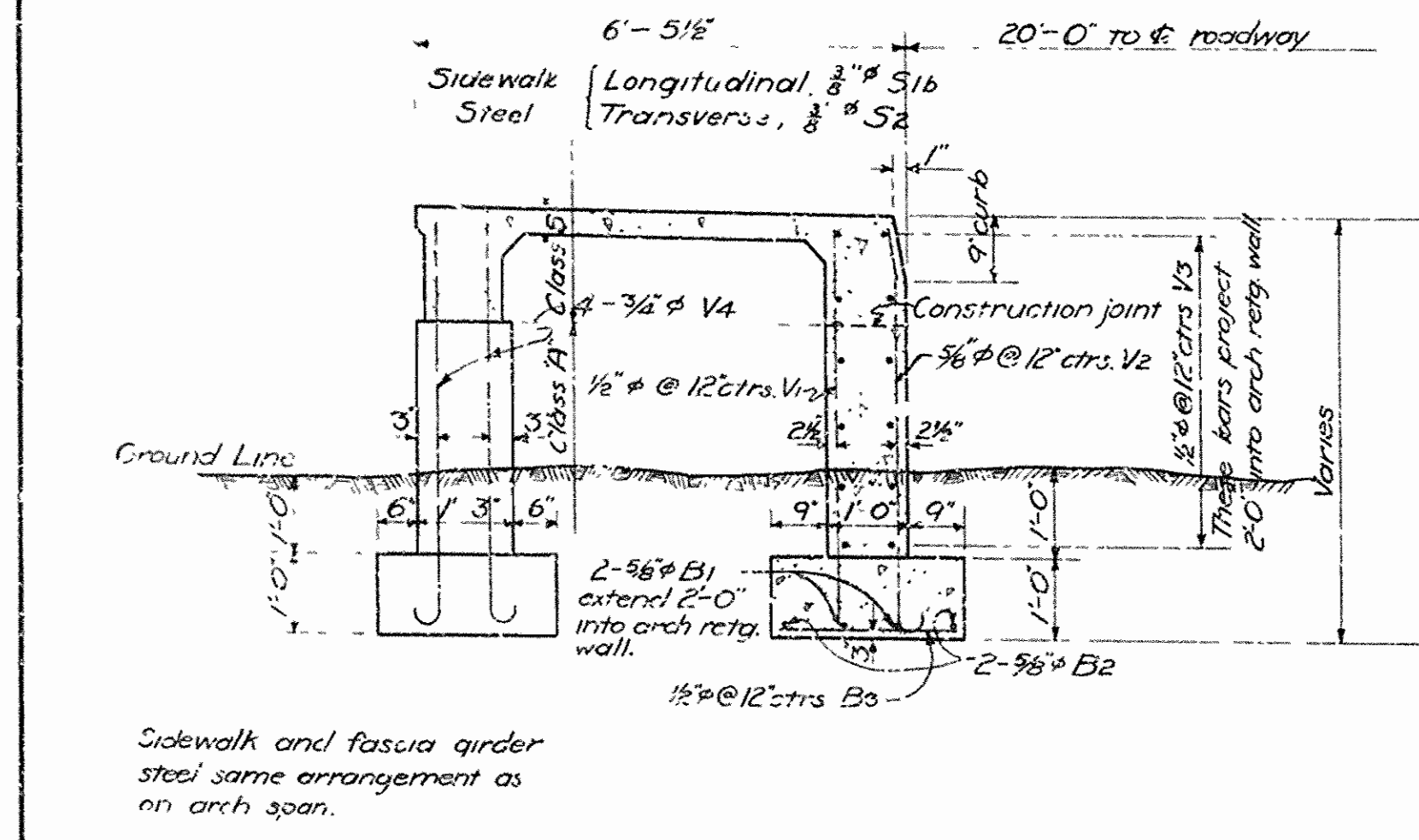
**NORTH ELEVATION SHOWING CONSTRUCTION AT ENDS OF SPANS**  
(South Elevation same type construction)



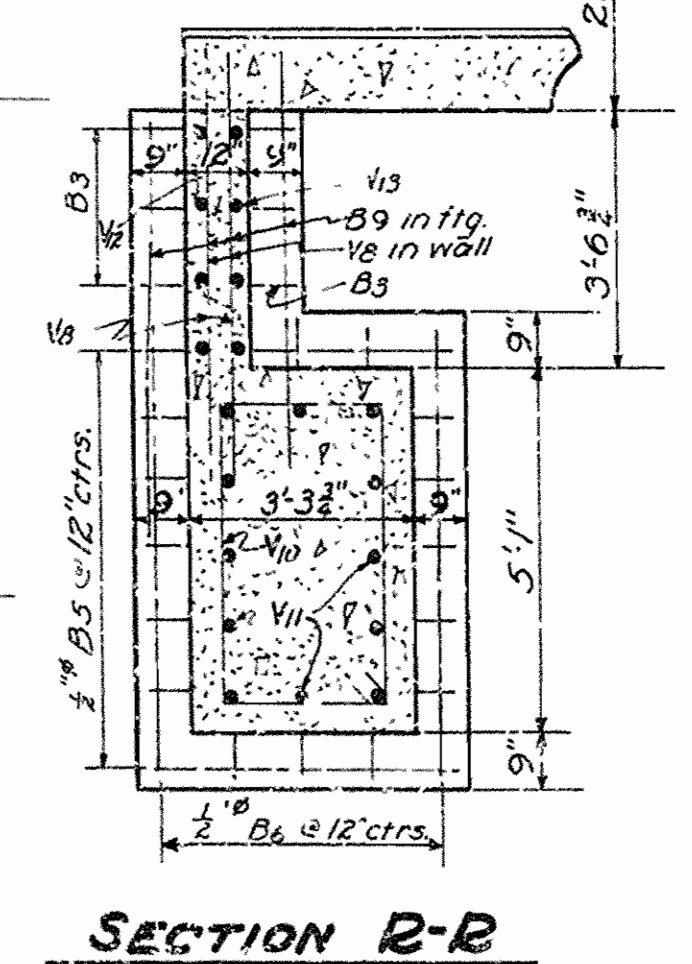
**END VIEW T-T**  
Scale - 3/8\"/>



**SECTION V-V DETAIL OF EXP JOINT**  
Scale: 1/2\"/>



**SECTION X-X**  
Scale: 1/2\"/>

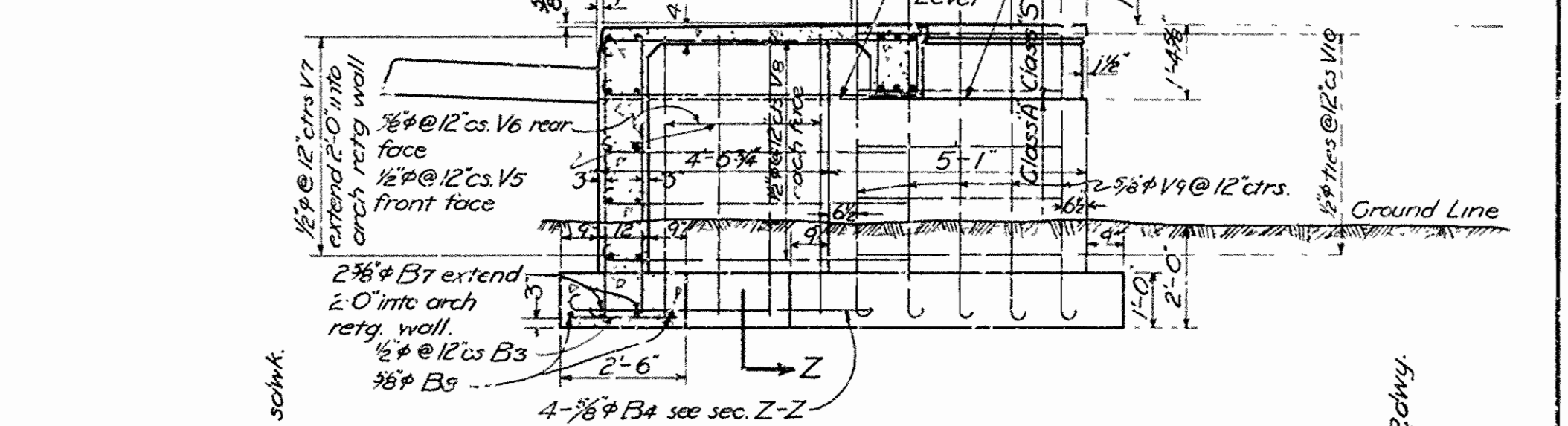


**SECTION B-B**

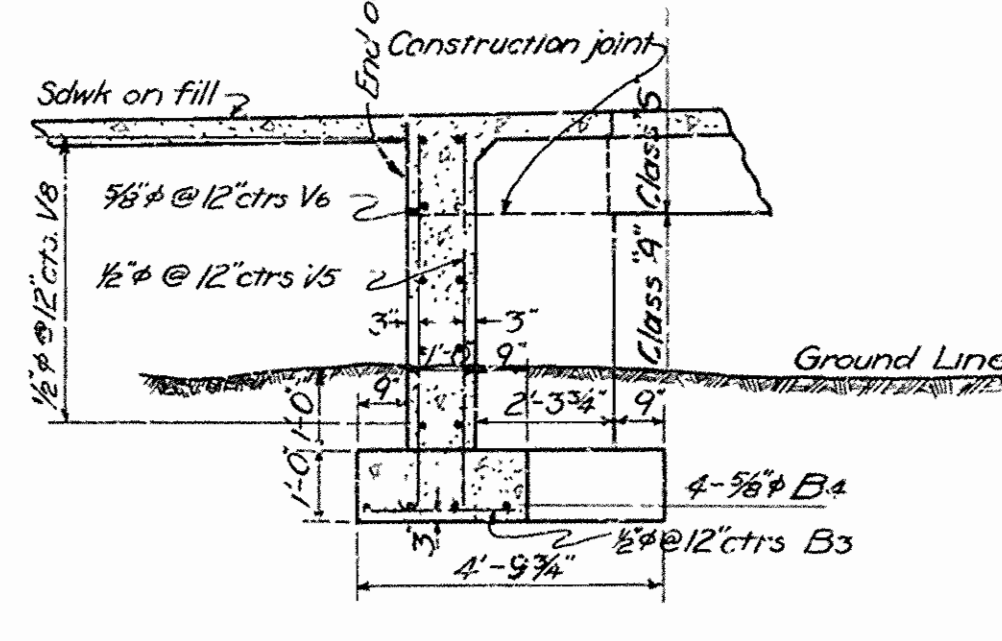
**BENT BAR LIST**

Mark	Size	Length	A	B	C	Bending Diagram
G1	1/2"	4'-4"	8 1/2"	1'-1"	4"	
G1-C10	1/2"	4'-11 1/2"	1'-2 1/2"	9 1/2"	4"	
C15-C25	1/2"	5'-2" ave	1'-2 1/2"	9 1/2"	4"	
C28	1/2"	8'-0"	1'-2"	2'-5"	4"	
C29	1/2"	10'-3"	1'-2"	3'-7"	4"	
C34-C42	1/2"	8'-6" ave	1'-2"	3'-7"	4"	
V10	1/2"	13'-8"	2'-2"	4'-1"	4"	
G10	3/4"	23'-3"	22'-6"	6"		
G2	3/4"	25'-9"	25'-0"	6"		
G3	3/4"	20'-0"	19'-3"	6"		
G7	3/4"	16'-9"	16'-0"	6"		
W44-W59	1/2"	5'-0" ave	4'-6"	4"		
W79	3/8"	6'-11"	6'-0"	7"		
W80	5/8"	4'-10"	4'-2"	5"		
V2	3/8"	5'-6"	4'-10"	5"		
V4	3/8"	5'-8"	5'-10"	6"		
V6	3/8"	5'-8"	5'-0"	5"		
V8	1/2"	6'-6"	6'-0"	4"		
V9	3/8"	6'-8"	6'-0"	5"		
V11	3/8"	6'-8"	6'-0"	5"		
V12	3/8"	5'-2"	4'-6"	5"		
B4	3/8"	7'-2"	6'-6"	5"		
B9	3/8"	6'-5"	5'-7"	5"		
C44	3/8"	3'-6"	2'-3"	5"		
C45	1"o	8'-0"	6'-0"	8"		
C45	1 1/8"o	8'-0"	6'-0"	8"		
C11	1"o	15'-0"	13'-5"	8"		
C15	1"o	12'-9"	6'-2"	7"		5'-0"
C26	1"o	12'-2"	5'-10"	7"		4'-3"
C31	1 1/8"o	17'-6"	6'-5"	7"		8'-6"
G4	3/4"	19'-6"	16'-7"	2'-6"		5"
G5	3/4"	15'-7"	9'-0"	2'-0"	5"	

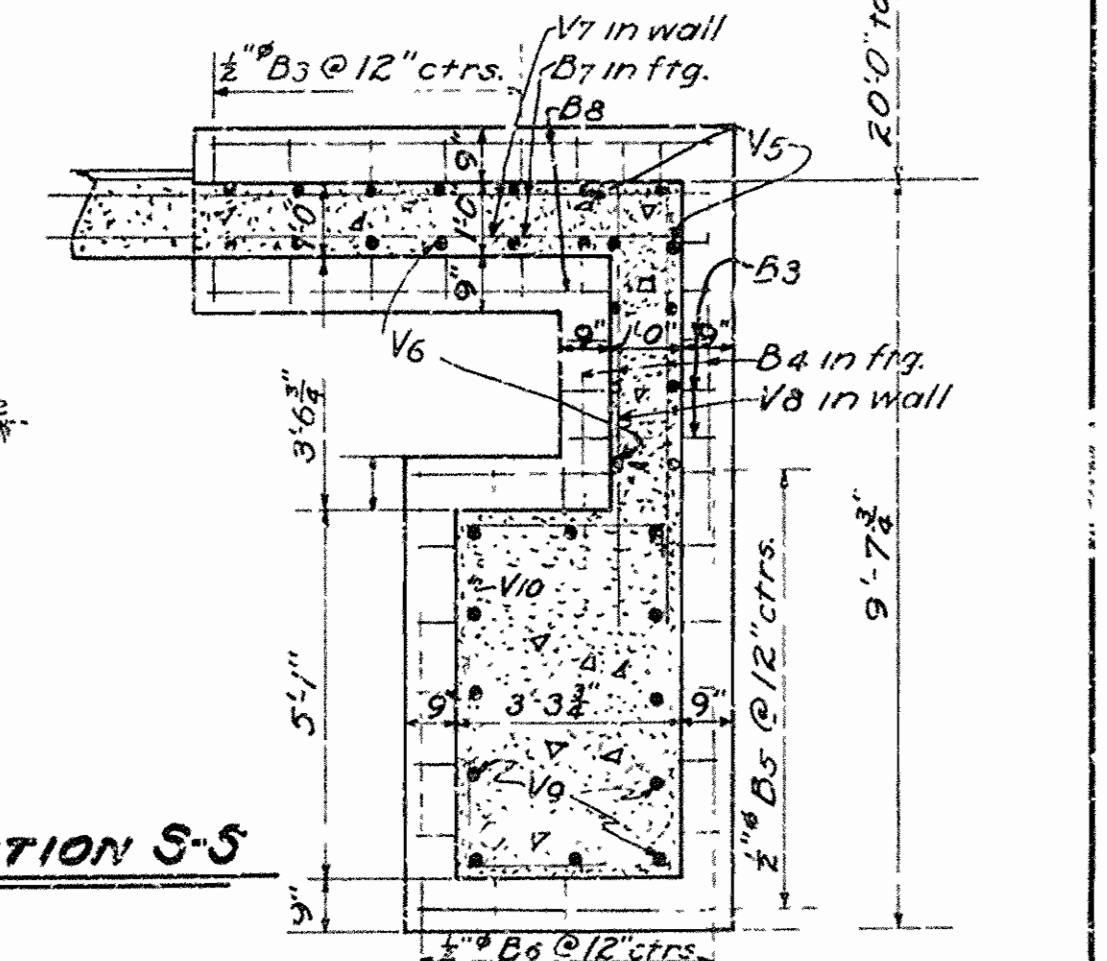
Lengths shown are nominal. Actual length depends upon excavation depths for portions of structure where used.



**SECTION Y-Y**



**SECTION Z-Z**



**SECTION S-S**

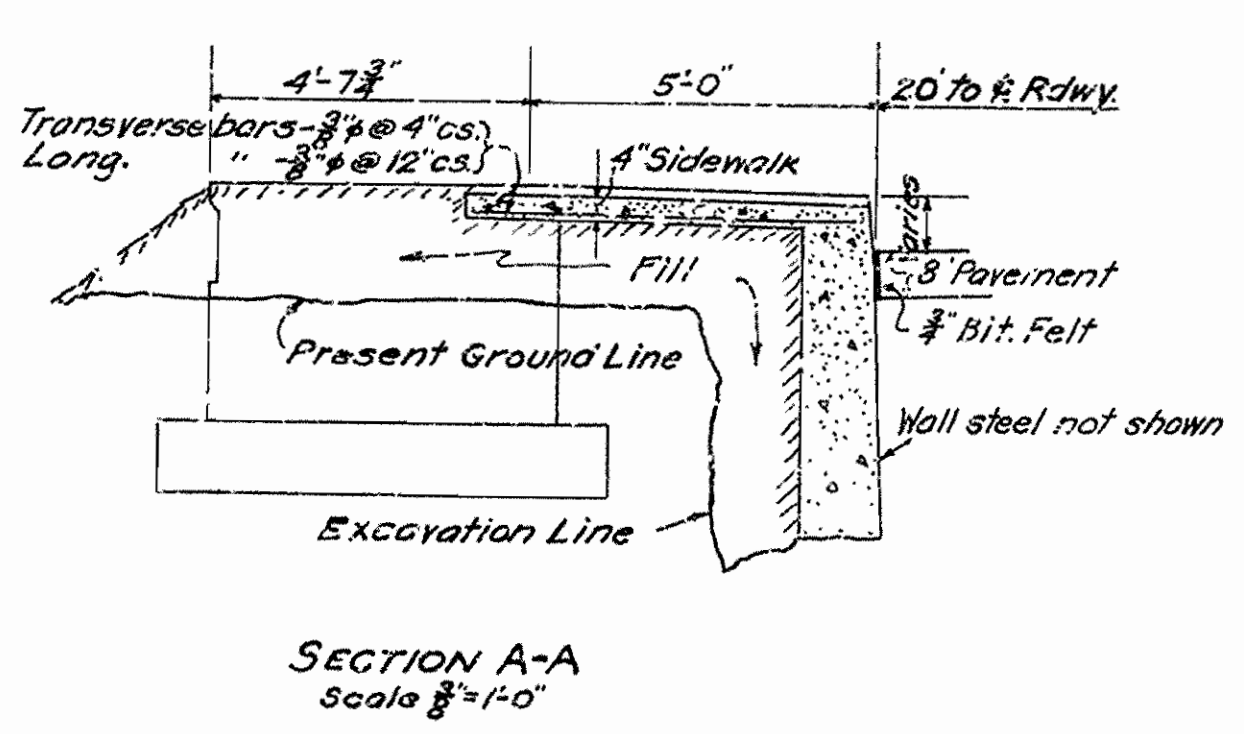
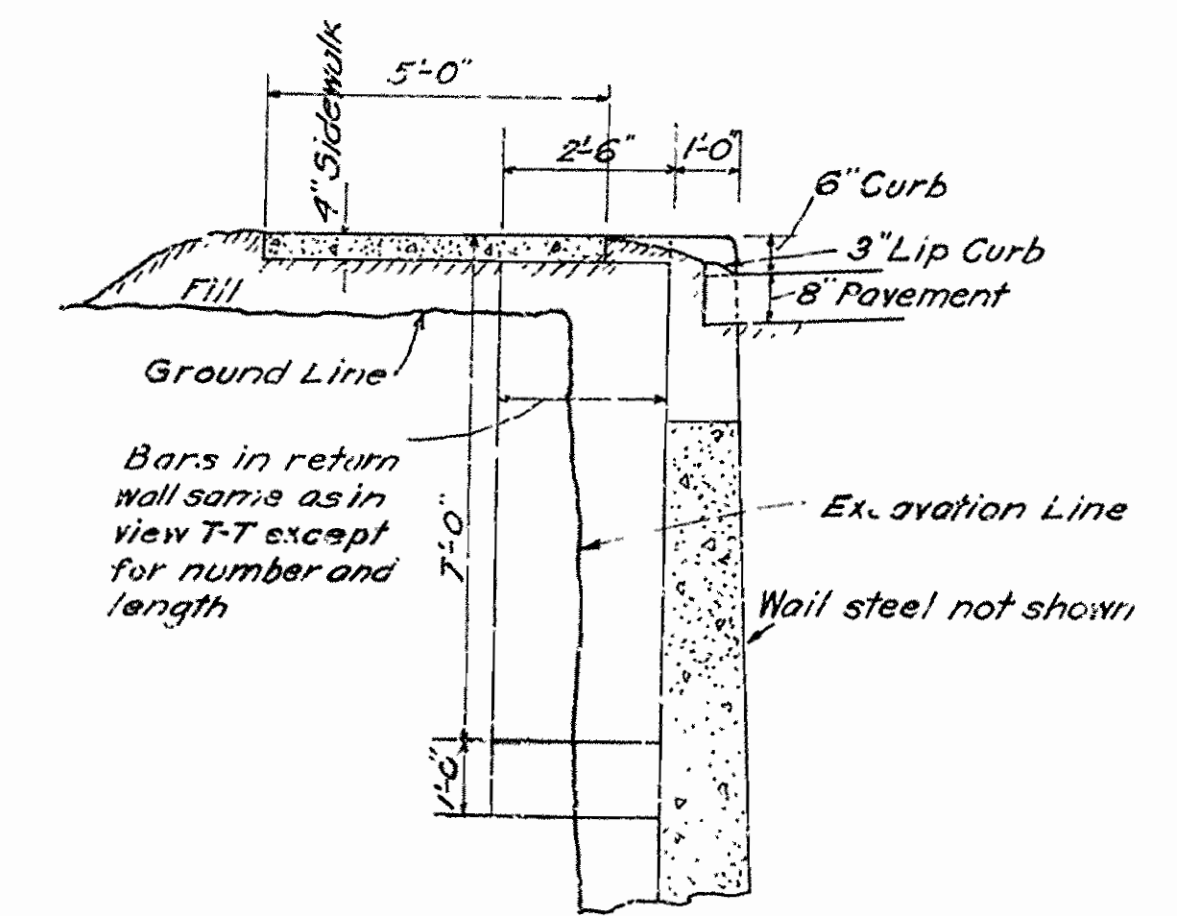
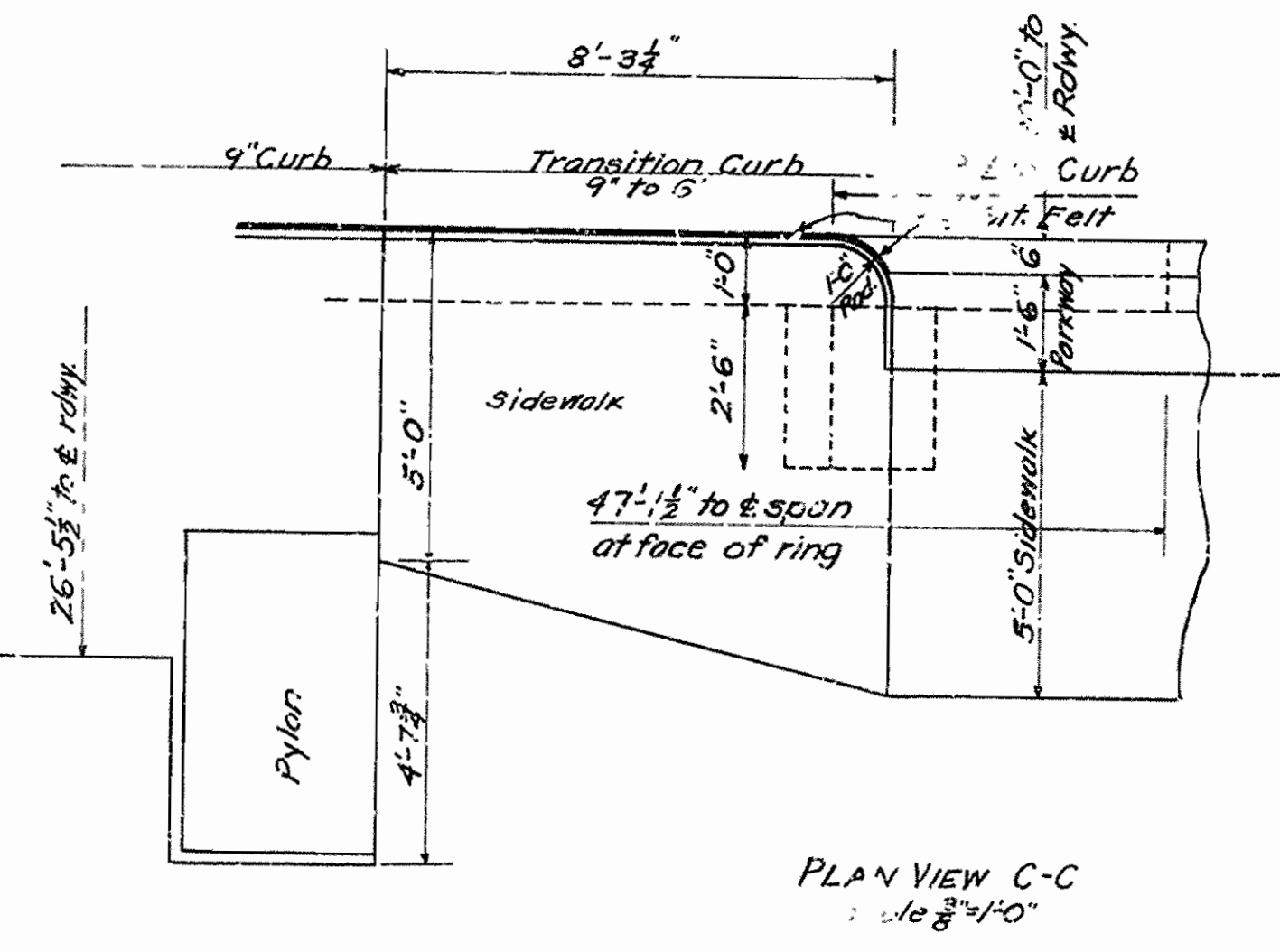
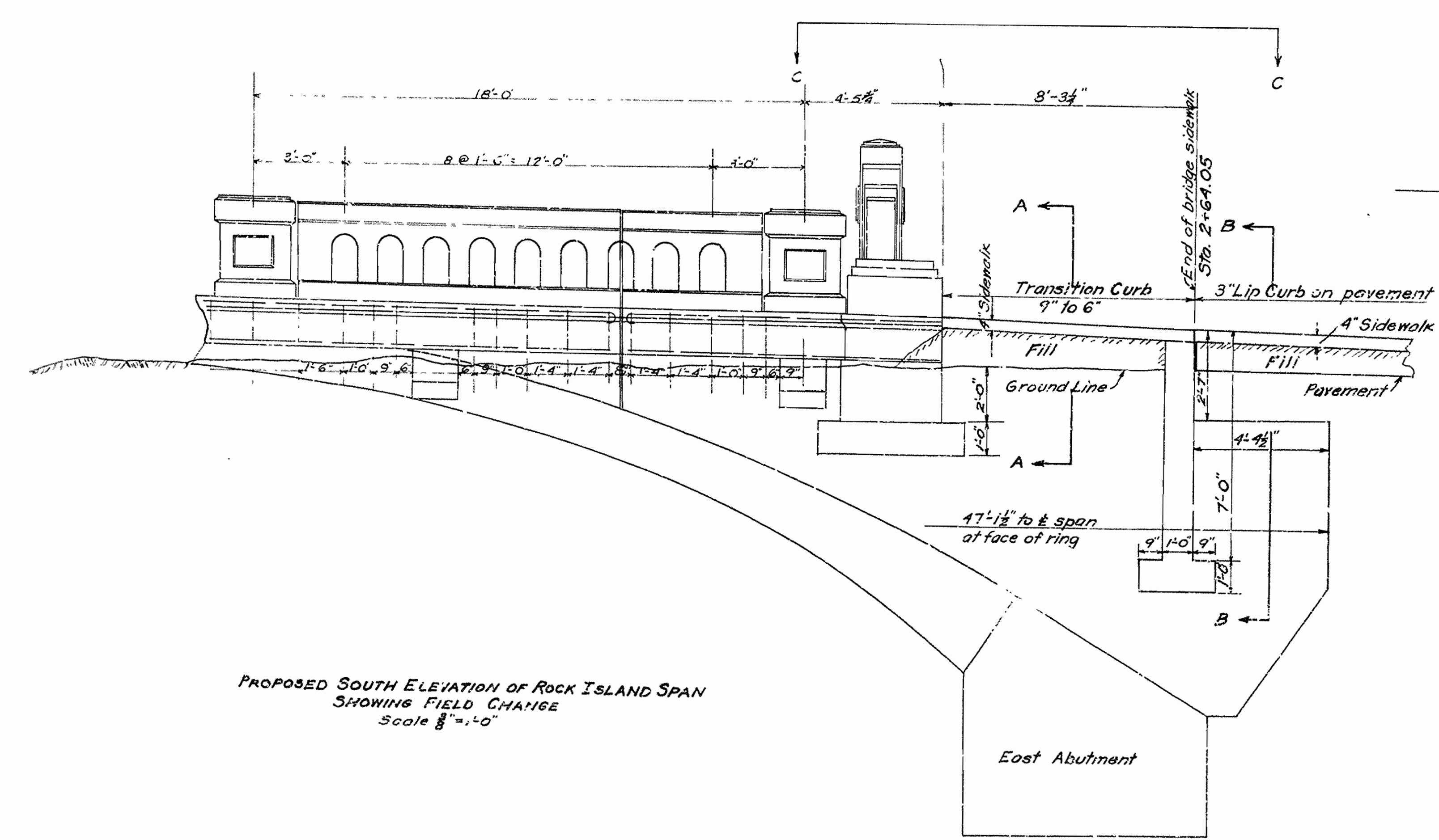
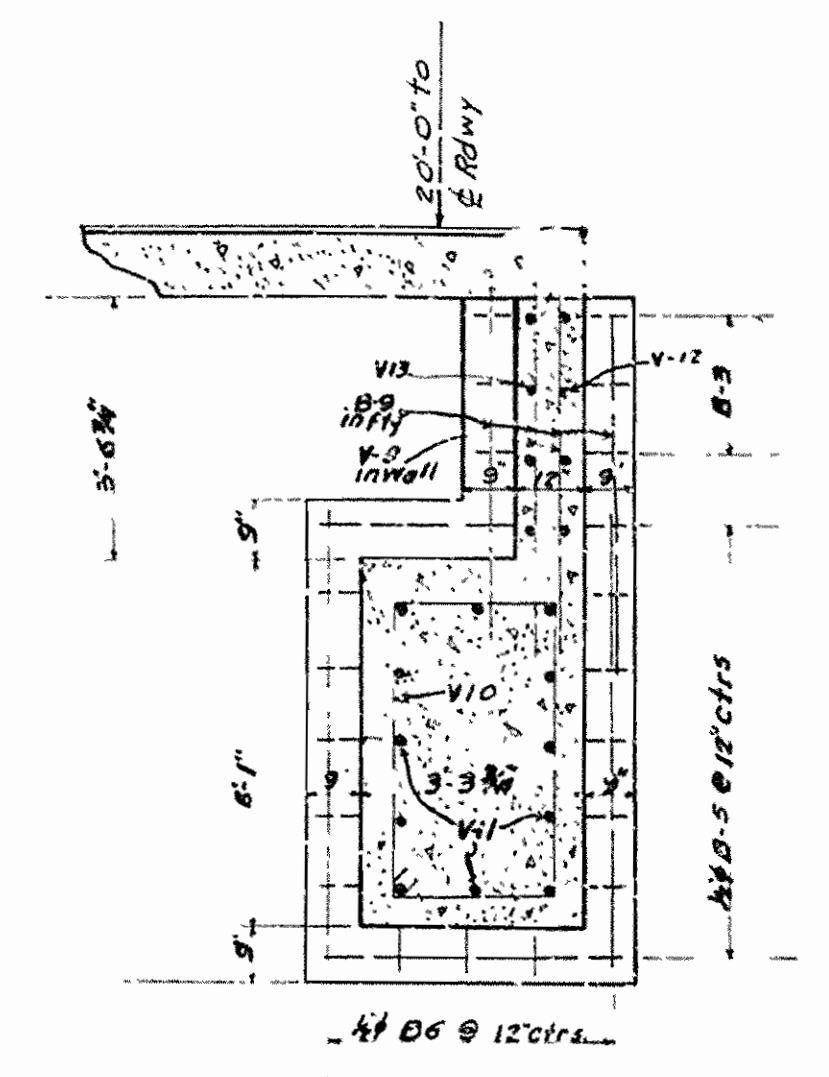
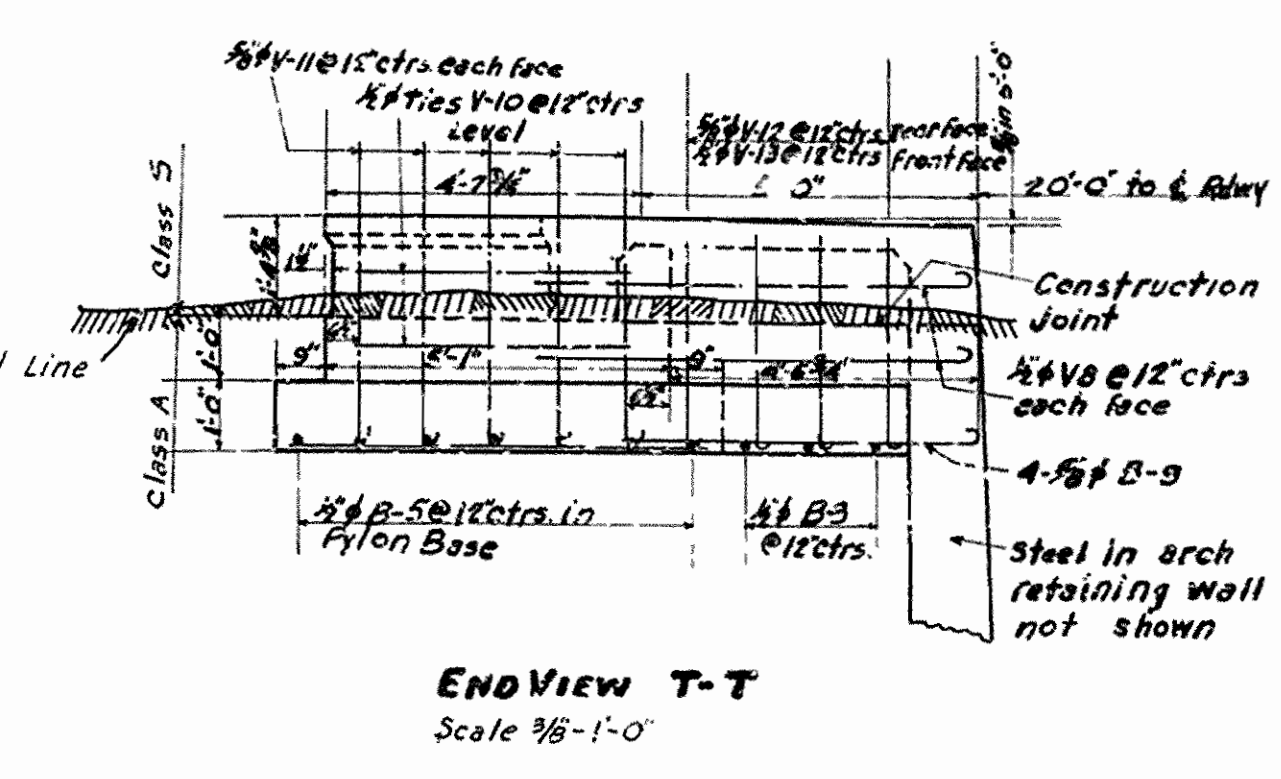
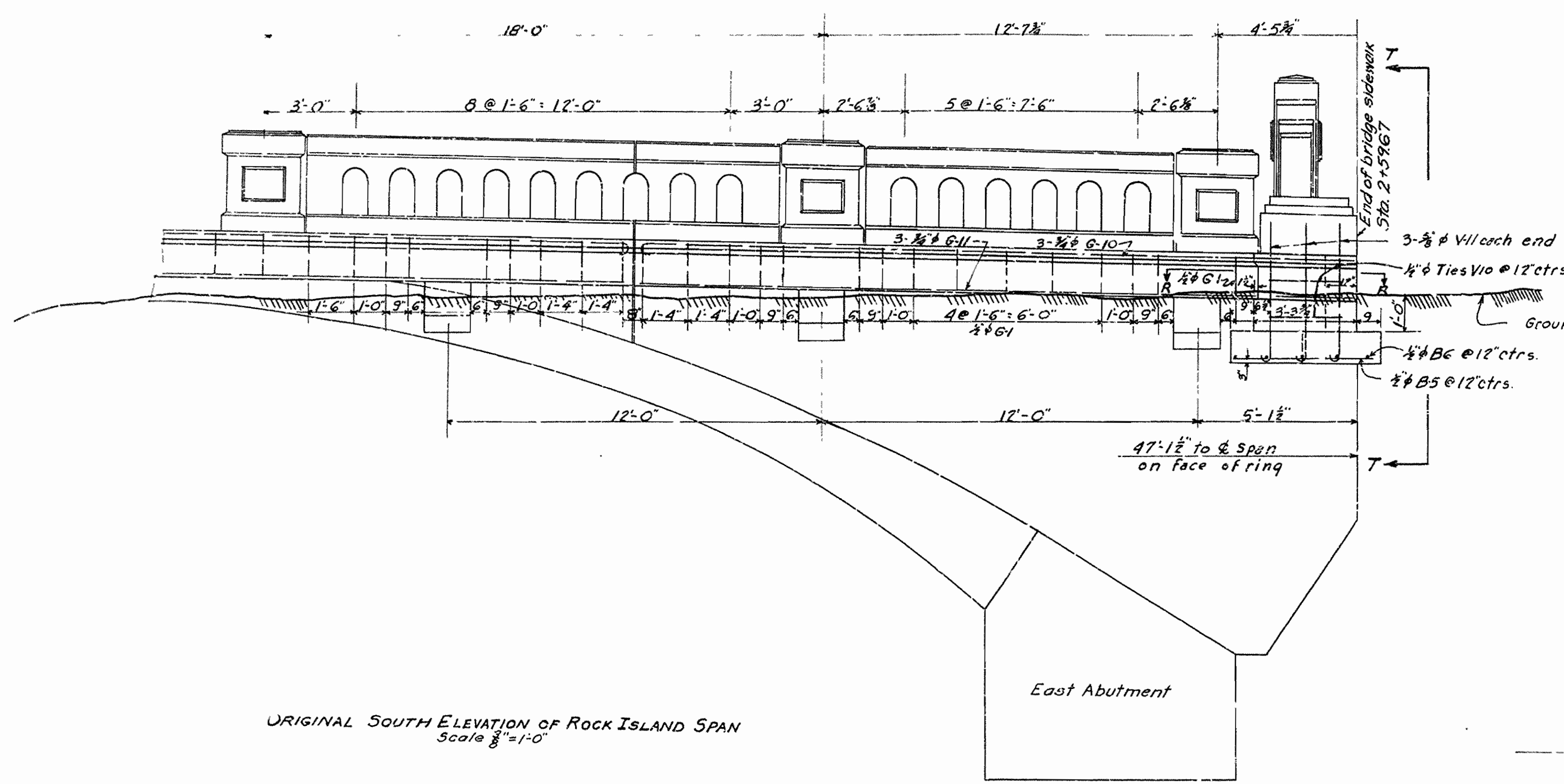
**BENT BAR LIST AND DETAILS OF CONSTRUCTION AT ENDS OF ARCH SPANS OVERPASS OVER MO. PAC. G.R.I. P.R.R. AT WEST 12 STREET LITTLE ROCK, ARK.**  
ARKANSAS STATE HIGHWAY COMMISSION  
LITTLE ROCK, ARK.

Drawn by B.V. Date: 11-4-36. Scale: 3/8\"/>

BRIDGE NO. 1983 DRWG. NO. 4181

Note: Dimensions shown are to centers of bars.

FED. ROAD DIST. NO.	STATE	PROJECT NO.	FISCAL YEAR	SHEET NO.	TOTAL SHEETS
6	ARK.	WRGM. 379-A			
STATE JOB NO. 6193					



FIELD CHANGE NO. 2  
DETAILS AT S.E. END OF ROCK ISLAND SPAN  
VIADUCT OVER MO.P., CIFIC R.R. & C.R.I. & B.R.R.  
WEST 12TH ST.-LITTLE ROCK, ARK.  
PULASKI COUNTY  
ROUTE SEC.

ARKANSAS STATE HIGHWAY COMMISSION  
LITTLE ROCK, ARK.

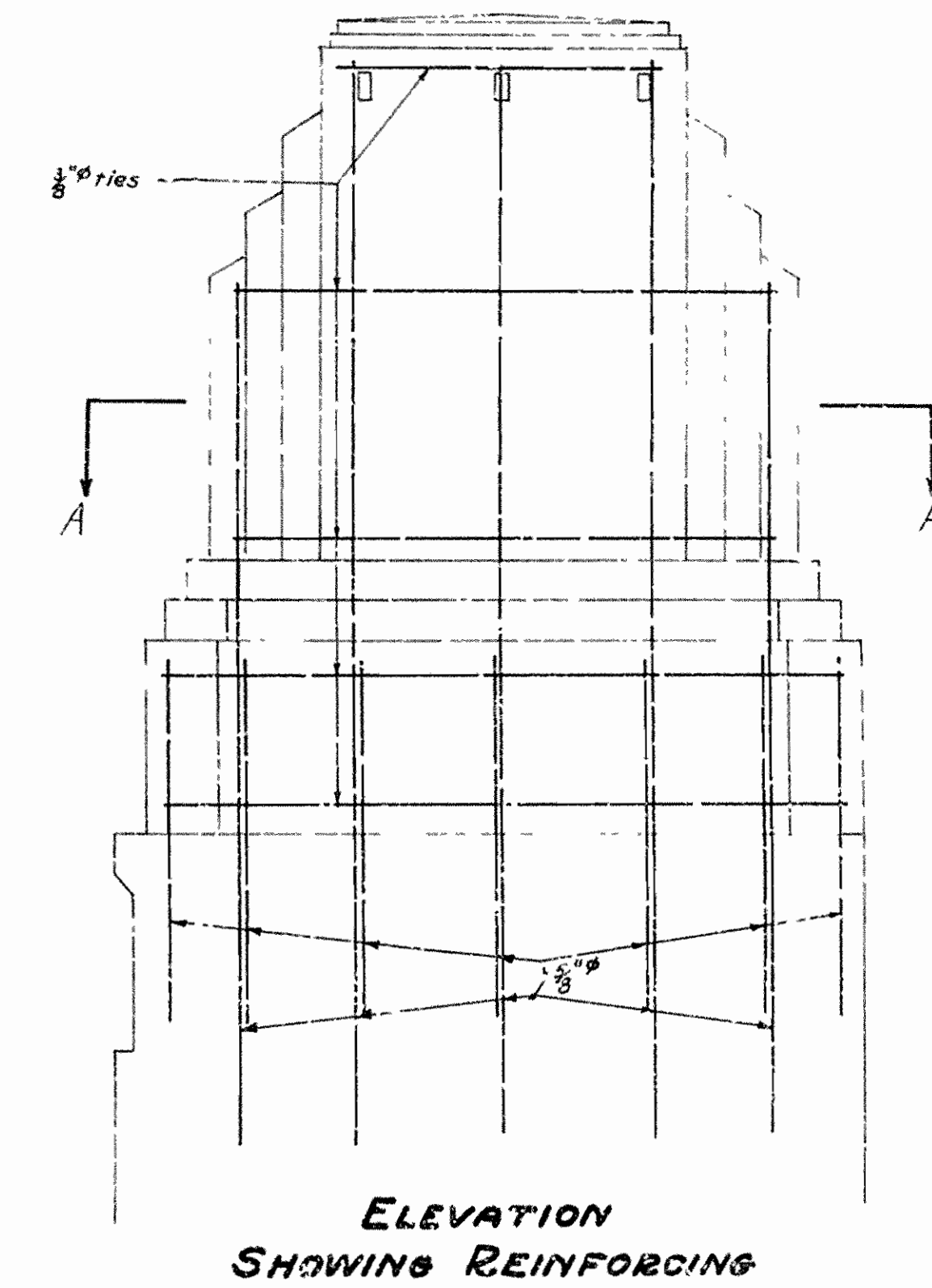
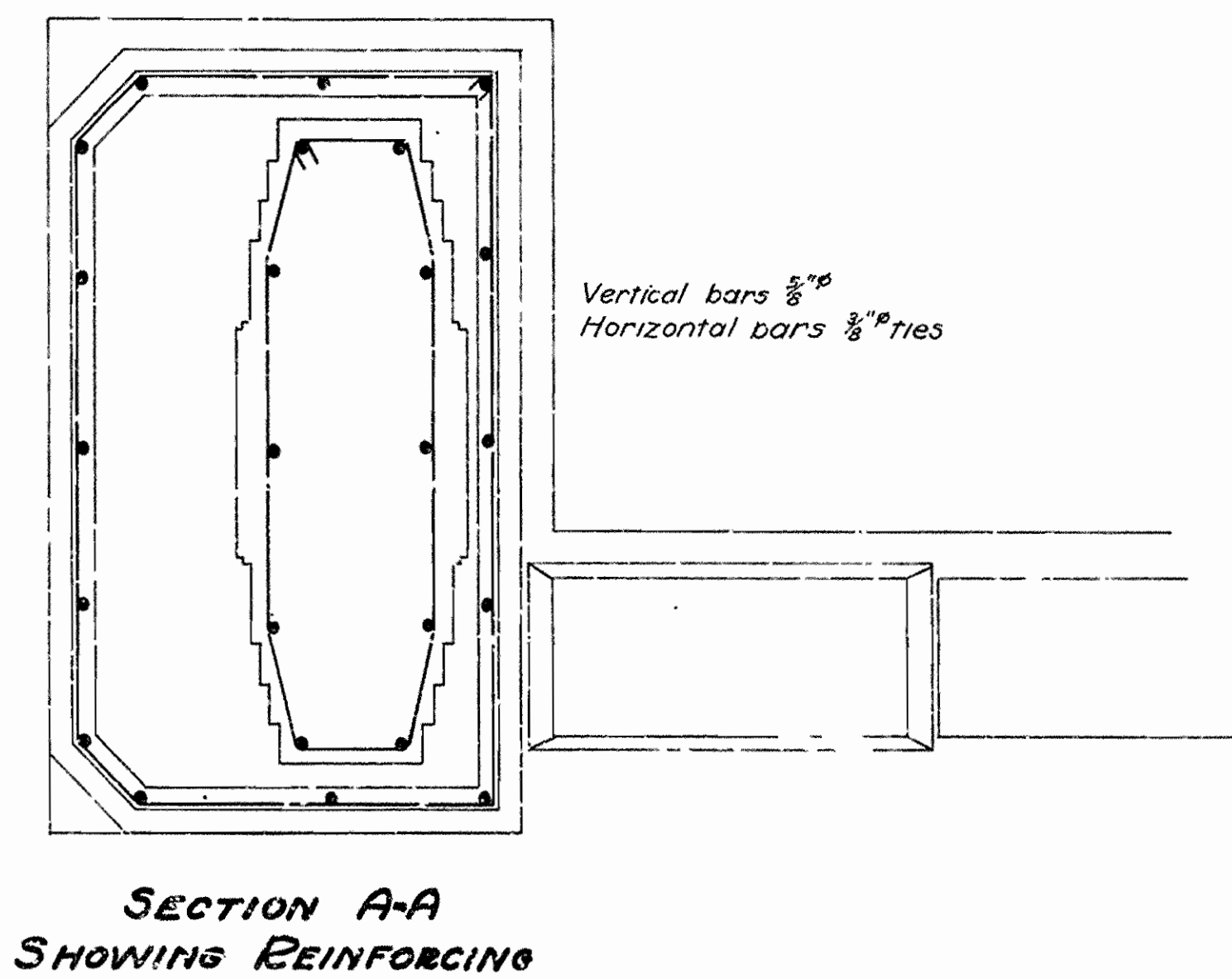
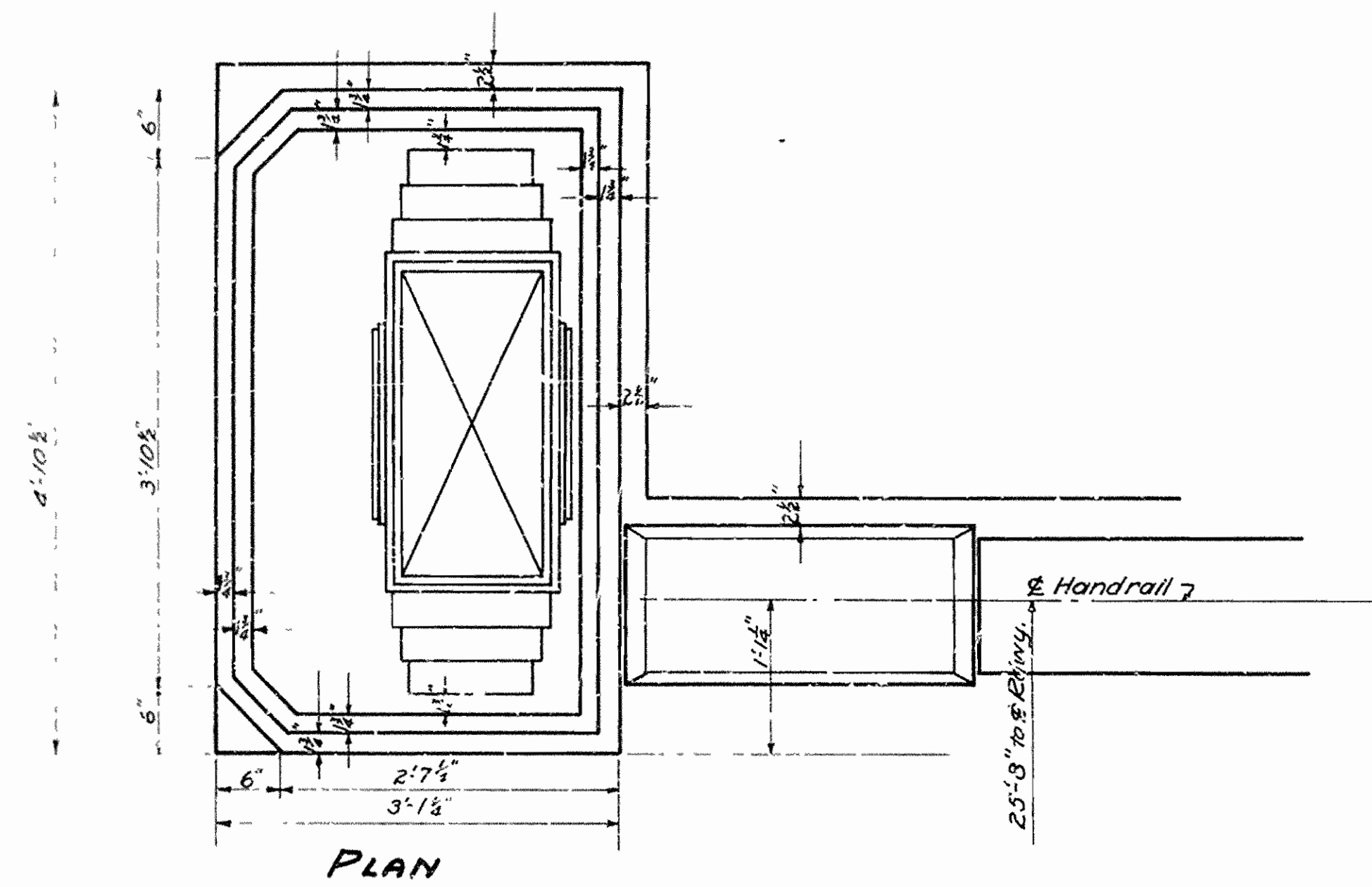
Drawn By: *BY* Date: 5-2-36  
Traced By: *BRV* Date: 5-12-36  
Checked By: \_\_\_\_\_ Date: \_\_\_\_\_

BRIDGE NO. 1963 DRAWING NO. 4181-A

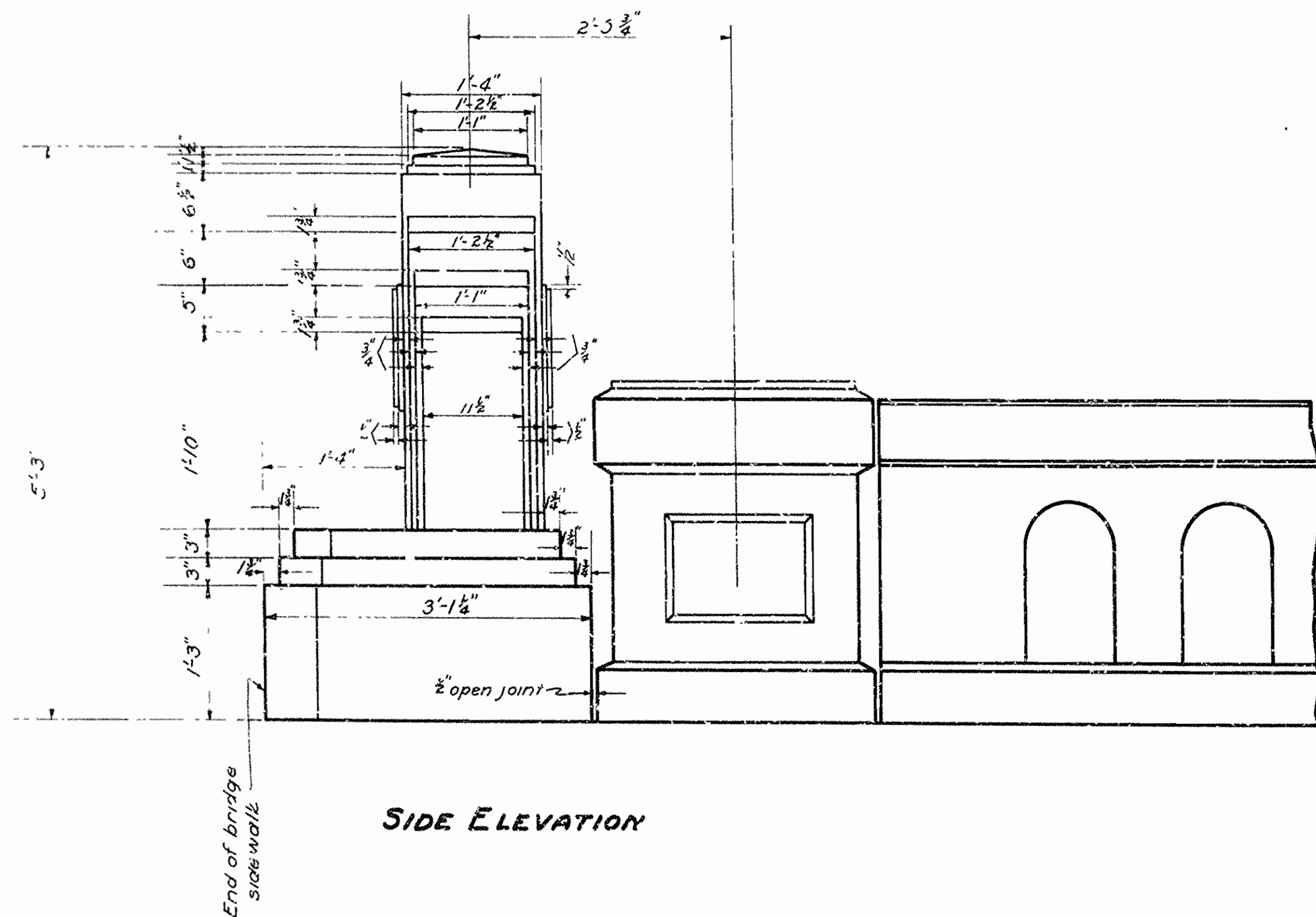
Scale:  $\frac{3}{8}$ " = 1' ft

FED. ROAD DIST. NO.	STATE	U.S.W.P.C.C. PROJ. NO.	FISCAL YEAR	SHEET NO.	TOTAL SHEETS
6	ARK.	W.P.M. 379A		6	13

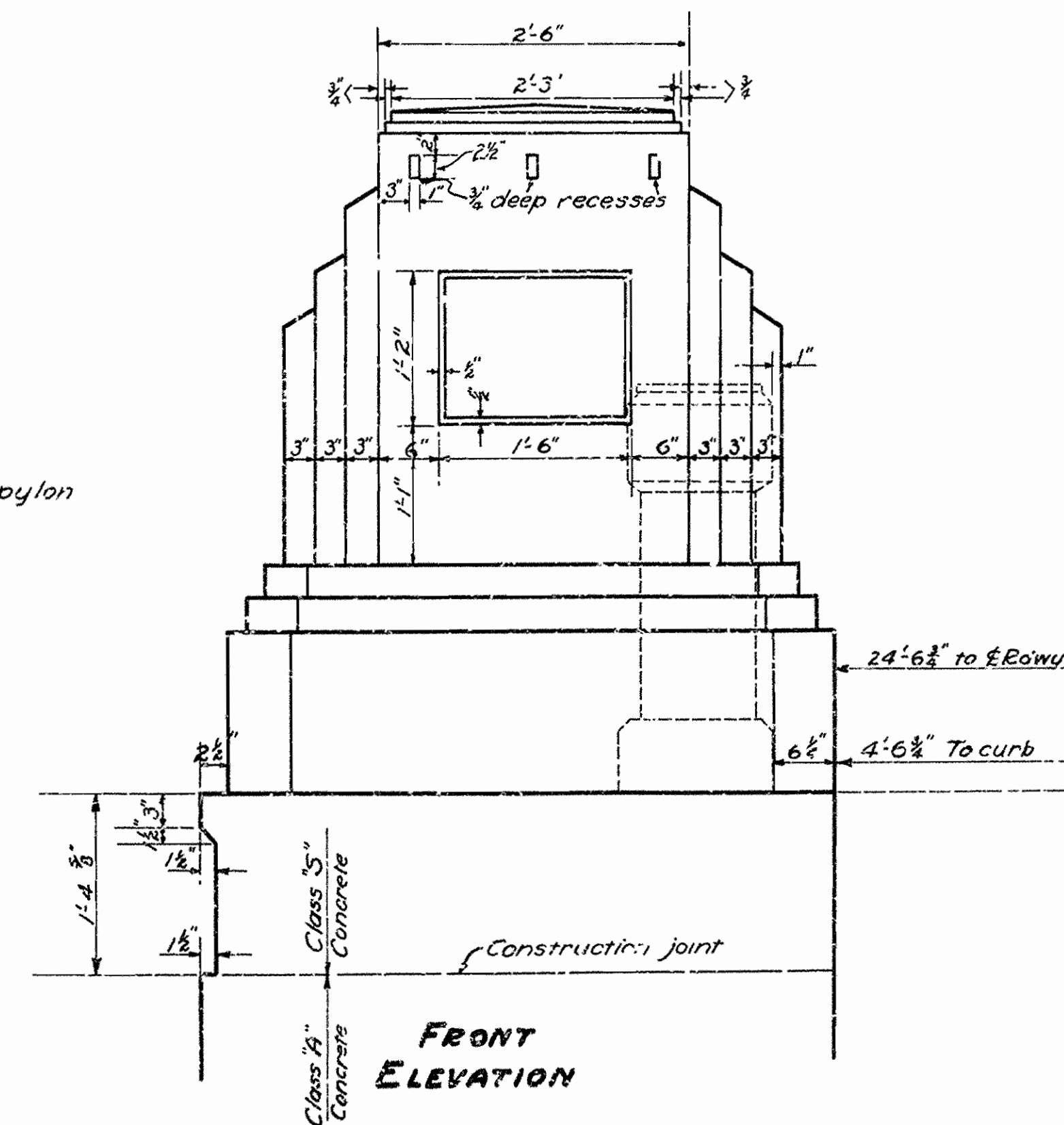
Job No. 6-193



Pylons to be paid for as Class 'S' Concrete



Note: Concrete in pylon to be Class 'S'.



**DETAILS OF PYLONS**  
**VIADUCT OVER C.R.I. R.R. AND MO. P.R.R.**  
**AT WEST 12<sup>TH</sup> ST. LITTLE ROCK, ARK.**

**PULASKI COUNTY**  
**ROUTE SEC.**

**ARKANSAS STATE HIGHWAY COMMISSION**  
**LITTLE ROCK, ARK.**

Drawn By: B.V. Date: 11-5-35  
 Traced By: G.W.B. Date: 11-6-35  
 Checked By: F.A.W. Date: 11-18-35  
 Scale: 1"=1'-0"

**BRIDGE NO. 1963 DRAWING NO. 4182**

*M.R. Lanier*  
 Bridge Engineer

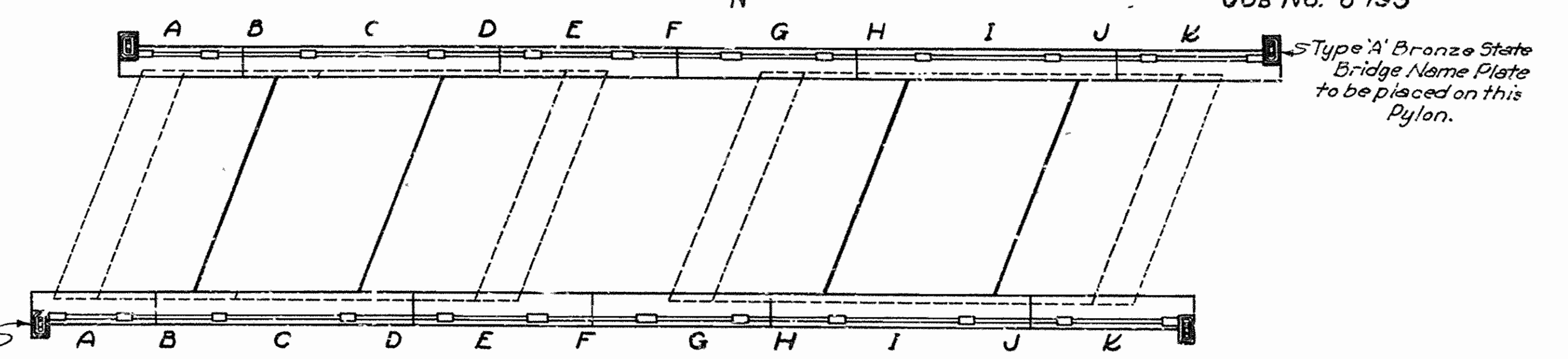
**SCHEDULE OF HANDRAIL SPACING**

Panel	A	B spaces @ 1'6"	C	Distance cc. posts
A		5	2'-6"	12'-7"
B		8	3'-0"	18'-0"
C		12	3'-0"	24'-0"
D		8	3'-0"	18'-0"
E	3'-6"	7	2'-11"	16'-11"
F	3'-11"	8	3'-0"	19'-11"
G	3'-6"	7	2'-11"	16'-11"
H		8	3'-0"	18'-0"
I		12	3'-0"	24'-0"
J		8	3'-0"	18'-0"
K		9	3'-2"	19'-10"

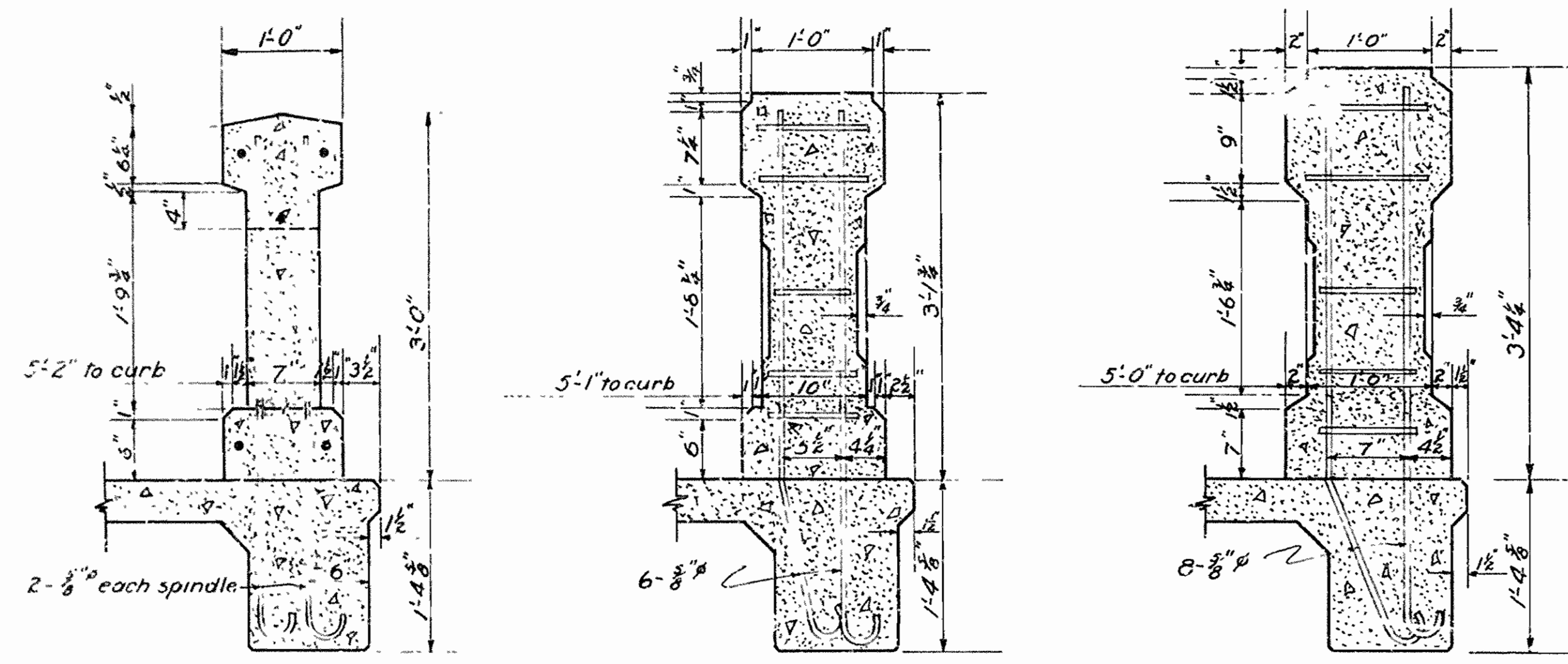
Note: Reinforcing steel in handrail above top of sidewalk to be included in price bid for handrail.

FED. ROAD DIST. NO.	STATE	U.S. W.P.C. PROJ. NO.	FISCAL YEAR	SHEET NO.	TOTAL SHEETS
6	ARK.	W.P.C. 379A		7	13

JOB No. 6-193



Type 'A' Bronze State Bridge Name Plate to be placed on this Pylon.

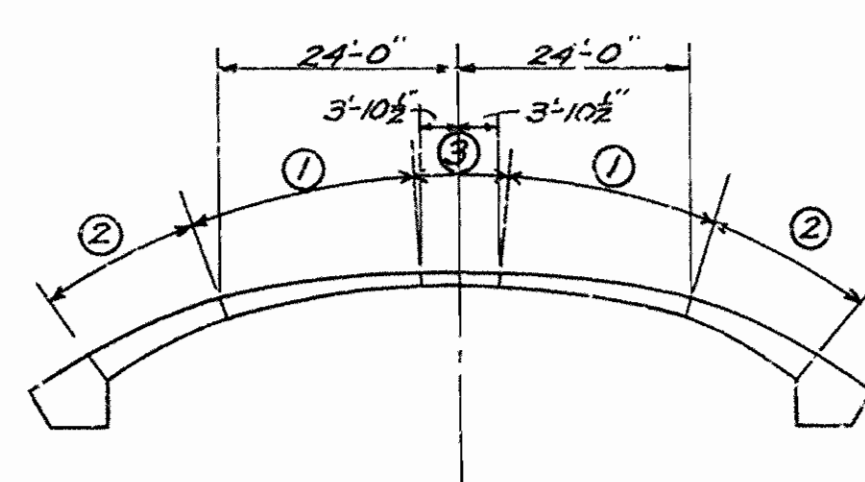


SECTION B-B

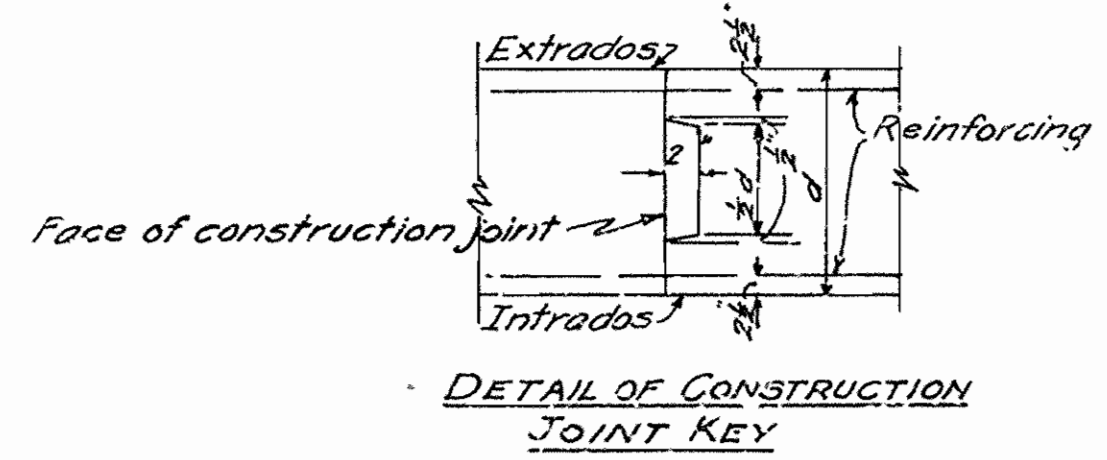
SECTION A-A

SECTION C-C

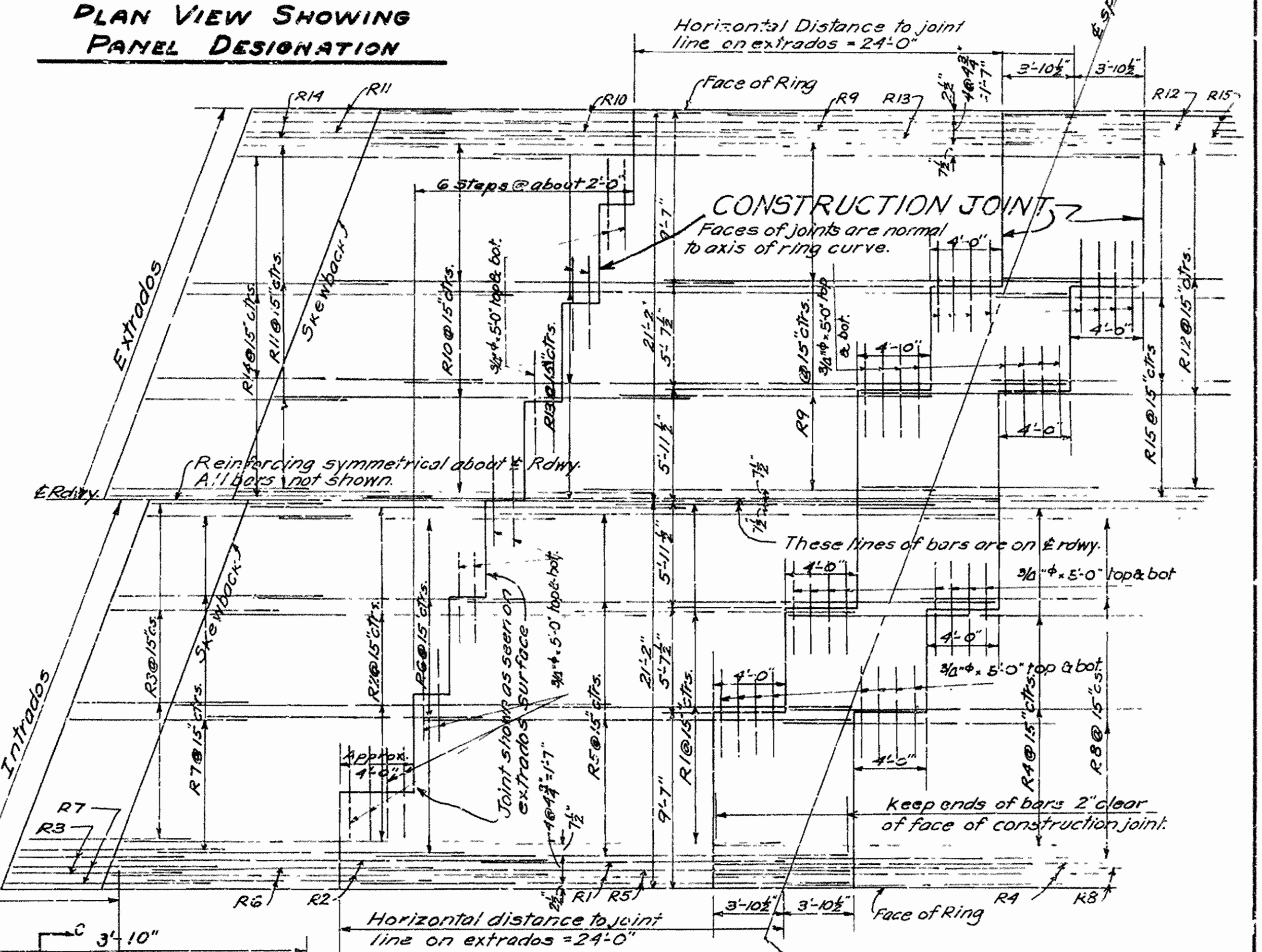
Type 'A' Bronze State Bridge Name Plate to be placed on this Pylon.



ELEVATION SHOWING ORDER OF CONCRETING RING IN SECTIONS  
Note: Concrete shall set at least 24 hours between pours.

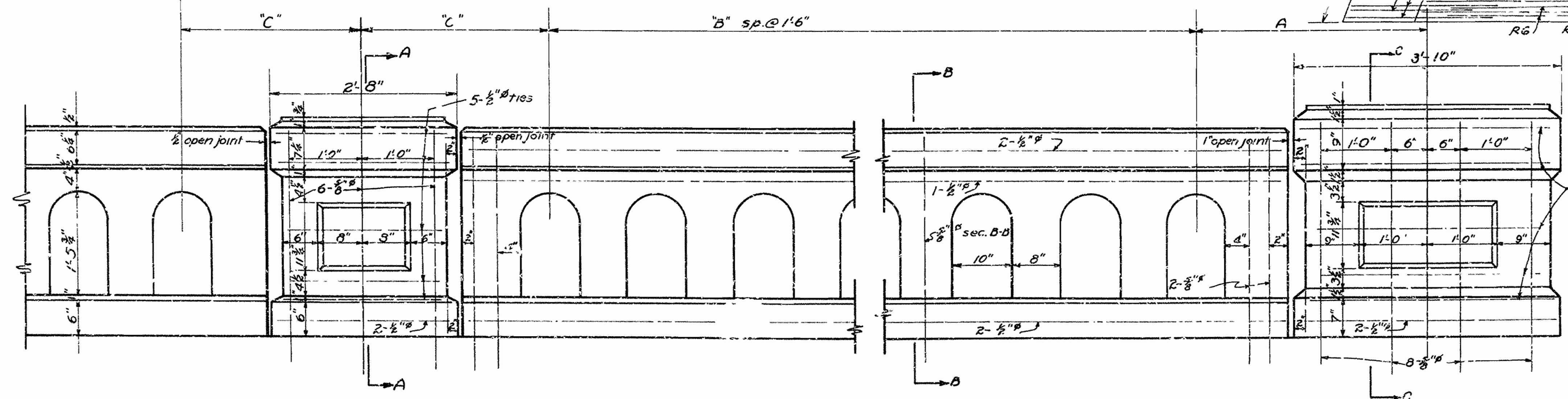


DETAIL OF CONSTRUCTION JOINT KEY



Reinforcing symmetrical about & row. A. 14 bars not shown.  
These lines of bars are on & row. 3/4" x 5'-0" top & bot.  
Joint shown as seen on extrados surface.  
keep ends of bars 2" clear of face of construction joint.

PLAN SHOWING BAR LAYOUT AND CONSTRUCTION JOINTS  
Scale: 1/8" = 1'-0"



INTERMEDIATE POSTS

POST AT ENDS OF SPANS BETWEEN MO.P & R.I. TRACKS  
4 REQUIRED

Construction joint key detail.  
Revised: Bar layout & construction joints, order of concreting ring in sections. 12/15/35. B.V.

**HANDRAIL DETAILS OF VIADUCT OVER C.R.I.P.R.Y. AND MO.P.R.R. AT WEST 17th ST. LITTLE ROCK, ARK.**

PULASKI COUNTY  
ROUTE SEC.  
ARKANSAS STATE HIGHWAY COMMISSION  
LITTLE ROCK, ARK.

Drawn By: BV Date: 11-4-35  
Traced By: C.W.B. Date: 11-6-35  
Checked By: E.A.W. Date: 11-13-35  
Scale: 1" = 1'-0"

N.B. GAVES  
BRIDGE ENGINEER

BRIDGE No. 1963 DRAWING No. 4183